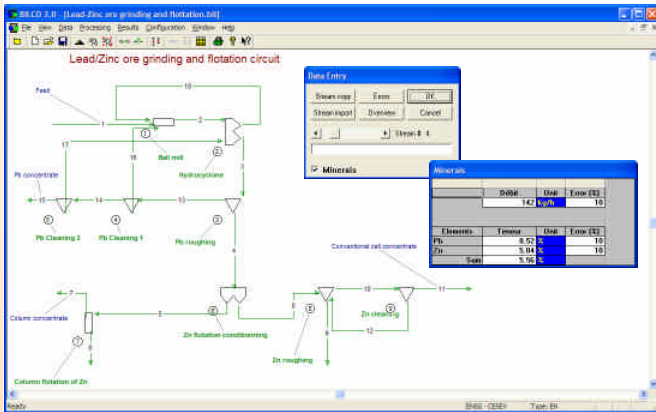


Data reconciliation by material balance

Principle

- To derive a coherent material balance from all the available data for all the process streams
- To determine in quantity and quality the composition of each process stream
- To improve the accuracy of measurements and determine unmeasured values



Applications

- Production snapshot
- Accurate performance evaluation
- Water balance, reagent consumption
- Estimation of losses
- Supply validation
- Discharge quantity and quality evaluation
- Intermediate inventory assessment

Characteristics

- Simple flowsheet drawing
- Configurable material models
- Configurable material conservation laws for each unit operation: partial conservation, phase transfers...
- Fast implementation and calculation
- Powerful and proven algorithm
- COM (Component Object Modeling) interface to communicate with other applications.

Advantages

- Easier and more accurate balance
- Optimized process monitoring
- Valuation and optimal use of measurements
- Reliable and correlated indicators of performance
- Environmental parameter control

